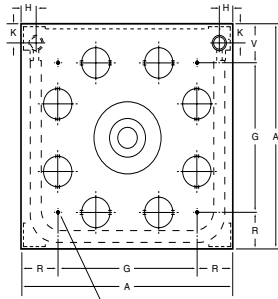
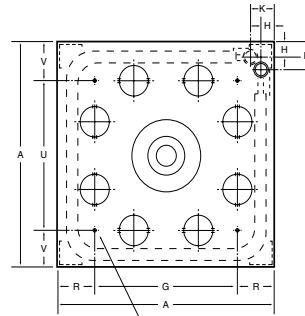


Dimensional Data



(4) MOUNTING HOLES $\frac{3}{8}$ " - 16 FOR MODELS 40-77
THREAD TAPS



(4) MOUNTING HOLES $\frac{3}{8}$ " - 16 FOR MODELS 104-367
THREAD TAPS $\frac{1}{2}$ " - 13 FOR MODELS 495-700

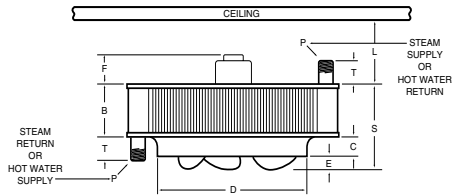


FIGURE A

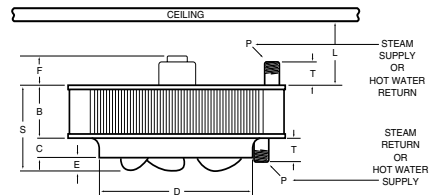


FIGURE B

FIGURE A — MODEL "VS" UNIT HEATER ROUGHING IN DIMENSIONS

Unit Size	Fan Dia.	A	B	C	D	E	F	G	H	K	L (Min.)	P (NPT)	R	S	T	U	V
40	11 $\frac{1}{4}$	18 $\frac{1}{4}$	4 $\frac{5}{8}$	1 $\frac{1}{4}$	11 $\frac{3}{4}$	$\frac{3}{4}$	4	11	1 $\frac{3}{8}$	1 $\frac{7}{8}$	7	1 $\frac{1}{2}$	3 $\frac{5}{8}$	6 $\frac{5}{8}$	2 $\frac{3}{4}$	11	3 $\frac{5}{8}$
62	13 $\frac{1}{2}$	21 $\frac{1}{4}$	4 $\frac{5}{8}$	1 $\frac{5}{8}$	14	1	4	14	1 $\frac{3}{8}$	1 $\frac{7}{8}$	7	1 $\frac{1}{2}$	3 $\frac{5}{8}$	7 $\frac{1}{8}$	2 $\frac{3}{4}$	14	3 $\frac{5}{8}$
77	13 $\frac{1}{2}$	21 $\frac{1}{4}$	6 $\frac{1}{8}$	1 $\frac{5}{8}$	14	1	3	14	1 $\frac{3}{8}$	1 $\frac{7}{8}$	7	1 $\frac{1}{2}$	3 $\frac{5}{8}$	8 $\frac{5}{8}$	2 $\frac{3}{4}$	14	3 $\frac{5}{8}$

FIGURE B — MODEL "VS" UNIT HEATER ROUGHING IN DIMENSIONS

Unit Size	Fan Dia.	A	B	C	D	E	F	G	H	K	L (Min.)	P (NPT)	R	S	T	U	V
104	16 $\frac{3}{4}$	25 $\frac{1}{4}$	6 $\frac{1}{8}$	2	17 $\frac{1}{2}$	1 $\frac{1}{8}$	3	17	1 $\frac{3}{8}$	2 $\frac{3}{4}$	7	1 $\frac{1}{2}$	4 $\frac{1}{8}$	9 $\frac{1}{8}$	2 $\frac{3}{4}$	17	4 $\frac{1}{8}$
125	16 $\frac{3}{4}$	25 $\frac{1}{4}$	6 $\frac{1}{8}$	2	17 $\frac{1}{2}$	1 $\frac{3}{4}$	3	17	1 $\frac{3}{8}$	2 $\frac{3}{4}$	7	1 $\frac{1}{2}$	4 $\frac{1}{8}$	9 $\frac{3}{4}$	2 $\frac{3}{4}$	17	4 $\frac{1}{8}$
144	19 $\frac{3}{4}$	29 $\frac{1}{2}$	6 $\frac{1}{8}$	2 $\frac{3}{8}$	20 $\frac{5}{8}$	1 $\frac{1}{4}$	4	20 $\frac{1}{2}$	1 $\frac{3}{4}$	3 $\frac{1}{2}$	7	2	4 $\frac{1}{2}$	9 $\frac{5}{8}$	2 $\frac{3}{4}$	20 $\frac{1}{2}$	4 $\frac{1}{2}$
164	19 $\frac{3}{4}$	29 $\frac{1}{2}$	6 $\frac{1}{8}$	2 $\frac{3}{8}$	20 $\frac{5}{8}$	1 $\frac{3}{4}$	4	20 $\frac{1}{2}$	1 $\frac{3}{4}$	3 $\frac{1}{2}$	7	2	4 $\frac{1}{2}$	10 $\frac{1}{8}$	2 $\frac{3}{4}$	20 $\frac{1}{2}$	4 $\frac{1}{2}$
200	19 $\frac{3}{4}$	29 $\frac{1}{2}$	7 $\frac{5}{8}$	2 $\frac{3}{8}$	20 $\frac{5}{8}$	2	4	20 $\frac{1}{2}$	1 $\frac{3}{4}$	3 $\frac{1}{2}$	7	2	4 $\frac{1}{2}$	12	2 $\frac{3}{4}$	20 $\frac{1}{2}$	4 $\frac{1}{2}$
237	25 $\frac{1}{4}$	37 $\frac{1}{2}$	7 $\frac{5}{8}$	3	26 $\frac{3}{8}$	1	3 $\frac{1}{2}$	28	1 $\frac{3}{4}$	3 $\frac{1}{2}$	7	2	4 $\frac{3}{4}$	11 $\frac{5}{8}$	2 $\frac{3}{4}$	18	9 $\frac{3}{4}$
285	25 $\frac{1}{4}$	37 $\frac{1}{2}$	7 $\frac{5}{8}$	3	26 $\frac{3}{8}$	1 $\frac{1}{4}$	3 $\frac{1}{2}$	28	1 $\frac{3}{4}$	3 $\frac{1}{2}$	7	2	4 $\frac{3}{4}$	11 $\frac{1}{4}$	2 $\frac{3}{4}$	18	9 $\frac{3}{4}$
317	25 $\frac{1}{4}$	37 $\frac{1}{2}$	7 $\frac{5}{8}$	3	26 $\frac{3}{8}$	2 $\frac{1}{8}$	4	28	1 $\frac{3}{4}$	3 $\frac{1}{2}$	7	2	4 $\frac{3}{4}$	12 $\frac{3}{4}$	2 $\frac{3}{4}$	18	9 $\frac{3}{4}$
367	25 $\frac{1}{4}$	37 $\frac{1}{2}$	9 $\frac{1}{8}$	3	26 $\frac{3}{8}$	2	3 $\frac{1}{2}$	28	1 $\frac{3}{4}$	3 $\frac{1}{2}$	7	2	4 $\frac{3}{4}$	14 $\frac{1}{8}$	2 $\frac{3}{4}$	18	9 $\frac{3}{4}$
495	30	42	9 $\frac{1}{8}$	3 $\frac{1}{2}$	31 $\frac{1}{4}$	1 $\frac{5}{8}$	3	30	2 $\frac{1}{4}$	4 $\frac{1}{4}$	7	2 $\frac{1}{2}$	6	14 $\frac{1}{4}$	3	30	6
585	30	42	12 $\frac{1}{8}$	3 $\frac{1}{2}$	31 $\frac{1}{4}$	2 $\frac{1}{8}$	3	30	2 $\frac{1}{4}$	4 $\frac{1}{4}$	7	2 $\frac{1}{2}$	6	17 $\frac{3}{4}$	3	30	6
700	30	42	13 $\frac{5}{8}$	3 $\frac{1}{2}$	31 $\frac{1}{4}$	3	4	30	2 $\frac{1}{4}$	4 $\frac{1}{4}$	7	2 $\frac{1}{2}$	6	20 $\frac{1}{4}$	3	30	6



260 North Elm Street
Westfield, MA 01085
Tel: (413) 568-9571
Fax: (413) 562-5311

PROJECT:
LOCATION:
ARCHITECT:
ENGINEER:
CONTRACTOR:
PO NUMBER:
DATE:

Standard Output Units

Hot Water Performance Data

Model No.	Water Temp. Drop	Output BTU/HR	G.P.M.	H ₂ O Press. Drop	Final Air Temp.	Motor H.P.	R.P.M.	Nominal CFM	Outlet Velocity	Sound Rating
VS-40	10°	28.8	5.93	.37	104.6°	1/40	1550	595	877	I
	20°	22.7	2.34	.06	95.2°					
	30°	16.7	1.15	.02	85.9°					
VS-40*	10°	22.9	4.71	.24	108.3°	1/40	1150	436	658	I
	20°	18.1	1.87	.04	98.3°					
	30°	13.4	.92	.01	88.4°					
VS-62	10°	48.1	9.92	1.05	104.8°	1/20	1550	989	1005	II
	20°	39.6	4.08	.19	96.9°					
	30°	31.1	2.14	.06	89.0°					
VS-62*	10°	38.1	7.85	.67	109.7°	1/20	1150	706	727	II
	20°	31.5	3.24	.13	101.1°					
	30°	24.8	1.71	.04	92.4°					
VS-77	10°	58.7	12.11	.98	105.1°	1/20	1550	1200	1220	II
	20°	48.4	4.99	.18	97.2°					
	30°	38.1	2.62	.05	89.3°					
VS-77*	10°	46.5	9.59	.63	110.0°	1/20	1150	858	894	II
	20°	38.5	3.97	.12	101.2°					
	30°	30.5	2.09	.03	92.7°					
VS-104	10°	77.2	15.91	2.06	106.6°	1/8	1070	1528	980	II
	20°	68.3	7.03	.44	101.2°					
	30°	59.3	4.08	.16	95.8°					
VS-104*	10°	63.7	13.13	1.43	108.6°	1/8	850	1208	783	II
	20°	56.5	5.82	.31	103.1°					
	30°	49.2	3.38	.11	97.6°					
VS-125	10°	94.9	19.55	3.04	108.9°	1/6	1100	1790	1170	III
	20°	83.7	8.63	.65	103.1°					
	30°	72.5	4.98	.23	97.3°					
VS-144	10°	117.6	24.24	4.32	108.8°	1/6	1100	2220	1045	III
	20°	105.2	10.84	.96	103.7°					
	30°	92.8	6.38	.36	98.5°					

Performance based on 200° EWT, 20° T.D., 60° E.A.T. Performance at 10° & 30° T.D. is also shown.

For capacities at other conditions, refer to Sterling catalog HCV.

*Speed controller option is required for reduced ratings.

Standard Output Units

Hot Water Performance Data

Model No.	Water Temp. Drop	Output BTU/HR	G.P.M.	H ₂ O Press. Drop	Final Air Temp.	Motor H.P.	R.P.M.	Nominal CFM	Outlet Velocity	Sound Rating
VS-164	10°	132.4	27.29	3.67	106.6°	1/6	1100	2620	1230	IV
	20°	118.6	12.22	.81	101.7°					
	30°	104.8	7.20	.30	96.9°					
VS-200	10°	156.2	32.20	5.02	105.0°	1/4	1100	3200	1495	III
	20°	139.7	14.40	1.11	100.2°					
	30°	123.2	8.47	.41	95.5°					
VS-237	15°	188.9	25.95	3.92	101.8°	1/4	1100	4162	1205	IV
	20°	180.1	18.56	2.10	99.9°					
	30°	162.7	11.18	.82	96.0°					
VS-285	15°	215.4	29.60	5.02	104.8°	1/2	1100	4430	1275	IV
	20°	205.4	21.17	2.68	102.7°					
	30°	185.3	12.73	1.04	98.5°					
VS-317	15°	254.9	35.03	6.88	105.1°	3/4	1140	5210	1500	IV
	20°	242.9	25.03	3.67	103.0°					
	30°	218.9	15.04	1.42	98.7°					
VS-367	15°	294.7	40.49	6.60	104.2°	3/4	1140	6140	1770	IV
	20°	280.8	28.94	3.52	102.2°					
	30°	253.1	17.39	1.36	98.0°					
VS-495	15°	—	—	—	—	1-1/2	1160	8020	1640	IV
	20°	368.1	37.93	5.81	102.3°					
	30°	333.6	22.92	2.29	98.3°					
VS-585	15°	451.2	62.00	8.78	104.0°	1-1/2	1160	9450	1930	IV
	20°	431.1	44.43	4.72	102.0°					
	30°	391.0	26.86	1.86	98.1°					
VS-700	15°	—	—	—	—	3	1165	11,000	2250	IV
	20°	519.4	53.52	5.29	103.5°					
	30°	470.9	32.35	2.08	99.5°					

Performance based on 200° EWT, 20° T.D., 60° E.A.T. Performance at 10° & 30° T.D. is also shown.
For capacities at other conditions, refer to Sterling catalog HCV.

Standard Output Units

Steam Performance Data

Performance based on 2# steam pressure at heater with air entering @ 60°F.

Model No.	BTU Per Hour	Condensate LBS. Per Hour	EDR.	Final Temp.	Motor		CFM 70° F Air Basis	Outlet Velocity	Sound Rating
					H.P.	RPM			
VS-40	41,300	43	172	124	1/40	1550	595	877	I
	<i>33,600</i>	<i>55</i>	<i>140</i>	<i>131</i>		<i>1150</i>	<i>436</i>	<i>658</i>	
VS-62	65,500	68	273	121	1/20	1550	989	1005	II
	<i>52,800</i>	<i>55</i>	<i>220</i>	<i>129</i>		<i>1150</i>	<i>706</i>	<i>727</i>	
VS-77	80,600	83	336	122	1/20	1550	1200	1220	II
	<i>65,100</i>	<i>67</i>	<i>271</i>	<i>130</i>		<i>1150</i>	<i>858</i>	<i>894</i>	
VS-104	101,800	106	424	123	1/8	1070	1490	980	II
	<i>87,900</i>	<i>91</i>	<i>366</i>	<i>129</i>		<i>850</i>	<i>1180</i>	<i>783</i>	
VS-125	124,400	129	518	124	1/6	1100	1790	1170	III
VS-144	152,000	157	633	123	1/6	1100	2220	1045	III
VS-164	173,000	179	720	121	1/6	1100	2620	1230	IV
VS-200	210,200	208	838	118	1/4	1100	3200	1495	III
VS-237	249,800	260	1040	115	1/4	1100	4180	1205	IV
VS-285	283,800	294	1180	119	1/2	1100	4430	1275	IV
VS-317	333,400	345	1390	119	3/4	1140	5210	1500	IV
VS-367	386,000	400	1610	118	3/4	1140	6140	1770	IV
VS-495	496,000	514	2070	117	1-1/2	1160	8020	1640	IV
VS-585	585,000	605	2440	117	1-1/2	1160	9450	1930	IV
VS-700	705,000	729	2940	119	3	1165	11,000	2250	IV

NOTES:

Constant speed units are rated at capacities shown in regular type; capacities shown in italic faced type apply only to units with multi-speed motors.

To determine BTU per hour capacities at various steam pressures and entering air temperatures, refer to Sterling catalog HCV.

Low Output Units

Standard Model "VS" Units With All Air Ports Open

Hot Water Performance Data

Model No.	Water Temp. Drop	Output BTU/HR	G.P.M.	H ₂ O Press. Drop	Final Air Temp.	Motor H.P.	R.P.M.	Nominal CFM	Outlet Velocity	Sound Rating
VS-40L	10°	23.9	4.92	.26	92.9°	1/40	1550	668	950	I
	20°	18.9	1.95	.04	86.1°					
	30°	14.0	.96	.01	79.3°					
VS-40L*	10°	16.7	3.45	.13	92.8°	1/40	1150	470	672	I
	20°	13.5	1.39	.02	86.4°					
	30°	—	—	—	—					
VS-62L	10°	41.5	8.56	.80	91.9°	1/20	1550	1200	1190	II
	20°	34.2	3.53	.15	86.3°					
	30°	27.0	1.85	.04	80.7°					
VS-62L*	10°	32.4	6.68	.50	94.7°	1/20	1150	862	858	II
	20°	26.9	2.77	.09	88.7°					
	30°	21.3	1.46	.03	82.8°					
VS-77L	10°	48.9	10.09	.69	93.2°	1/20	1550	1360	1350	II
	20°	40.5	4.17	.13	87.4°					
	30°	32.0	2.20	.04	81.7°					
VS-77L*	10°	38.5	7.94	.44	95.7°	1/20	1150	995	992	II
	20°	32.0	3.29	.08	89.6°					
	30°	25.4	1.75	.02	83.5°					
VS-104L	10°	63.7	13.13	1.43	93.5°	1/8	1070	1752	1050	II
	20°	56.5	5.82	.31	89.7°					
	30°	49.2	3.38	.11	85.9°					
VS-104L*	10°	54.5	11.24	1.06	93.5°	1/8	850	1499	827	II
	20°	48.5	4.99	.23	89.8°					
	30°	42.4	2.91	.08	86.1°					
VS-125	10°	83.7	17.24	2.40	95.4°	1/6	1100	2180	1390	III
	20°	73.9	7.62	.51	91.3°					
	30°	64.2	4.41	.18	87.1°					
VS-144L	10°	95.4	19.66	2.92	97.3°	1/6	1100	2360	1080	III
	20°	85.5	8.81	.65	93.4°					
	30°	75.6	5.20	.24	89.5°					

Performance based on 200° EWT, 20° T.D., 60° E.A.T. Performance at 10° & 30° T.D. is also shown.

For capacities at other conditions, refer to Sterling catalog HCV.

*Speed controller option is required for reduced ratings.

Low Output Units

Standard Model "VS" Units With All Air Ports Open

Hot Water Performance Data

Model No.	Water Temp. Drop	Output BTU/HR	G.P.M.	H ₂ O Press. Drop	Final Air Temp.	Motor H.P.	R.P.M.	Nominal CFM	Outlet Velocity	Sound Rating
VS-164L	10°	112.3	23.15	2.70	95.4°	1/6	1100	2920	1340	IV
	20°	100.7	10.38	.60	91.8°					
	30°	89.2	6.13	.22	88.1°					
VS-200L	10°	135.8	27.98	3.85	96.9°	1/4	1100	3390	1560	III
	20°	121.8	12.52	.85	93.0°					
	30°	107.3	7.37	.32	89.2°					
VS-237L	10°	168.5	34.72	6.75	94.5°	1/4	1100	4507	1270	IV
	20°	153.8	15.85	1.56	91.4°					
	30°	139.1	9.56	.61	88.4°					
VS-285L	10°	188.9	25.95	3.92	94.5°	1/2	1100	5040	1420	IV
	20°	180.1	18.56	2.10	92.9°					
	30°	162.7	11.18	.82	89.7°					
VS-317L	10°	220.9	30.35	5.26	95.7°	3/4	1140	5700	1610	IV
	20°	210.6	21.70	2.81	94.1°					
	30°	189.9	13.05	1.09	90.7°					
VS-367L	10°	260.7	35.82	5.24	96.4°	3/4	1140	6600	1870	IV
	20°	248.5	25.61	2.80	94.7°					
	30°	224.2	15.40	1.09	91.3°					
VS-495L	10°	—	—	—	—	1-1/2	1160	9380	1860	IV
	20°	310.5	32.00	4.23	90.5°					
	30°	281.7	19.35	1.67	87.7°					
VS-585L	10°	394.4	54.19	6.83	95.3°	1-1/2	1160	10,300	2060	IV
	20°	377.0	38.85	3.68	93.7°					
	30°	342.2	23.51	1.45	90.6°					
VS-700L	10°	—	—	—	—	3	1165	11,900	2380	IV
	20°	453.7	46.76	4.11	95.1°					
	30°	411.7	28.28	1.62	91.9°					

Performance based on 200° EWT, 20° T.D., 60° E.A.T. Performance at 10° & 30° T.D. is also shown.
For capacities at other conditions, refer to Sterling catalog HCV.

Low Output Units

Standard Model "VS" Units With All Air Ports Open

Steam Performance Data

Performance based on 2# steam pressure at heater with air entering @ 60°F.

Model No.	BTU Per Hour	Condensate LBS. Per Hour	EDR.	Final Temp.	Motor		CFM 70° F Air Basis	Outlet Velocity	Sound Rating
					H.P.	RPM			
VS-40L	34,800	36	145	108	1/40	1550	668	950	I
	<i>26,000</i>	<i>27</i>	<i>108</i>	<i>111</i>		<i>1150</i>	<i>470</i>	<i>672</i>	
VS-62L	57,200	59	238	104	1/20	1550	1200	1190	I
	<i>45,800</i>	<i>48</i>	<i>191</i>	<i>109</i>		<i>1150</i>	<i>862</i>	<i>858</i>	
VS-77L	68,000	71	283	106	1/20	1550	1360	1350	II
	<i>55,000</i>	<i>57</i>	<i>229</i>	<i>111</i>		<i>1150</i>	<i>995</i>	<i>992</i>	
VS-104L	85,400	89	356	108	1/8	1070	1640	1050	II
	<i>71,200</i>	<i>74</i>	<i>296</i>	<i>111</i>		<i>850</i>	<i>1290</i>	<i>827</i>	
VS-125L	111,000	115	462	107	1/6	1100	2180	1390	III
VS-144L	125,000	130	524	109	1/6	1100	2360	1080	III
VS-164L	149,000	154	620	107	1/6	1100	2920	1340	IV
VS-200L	176,800	183	736	108	1/4	1100	3390	1560	III
VS-237L	214,900	224	895	104	1/4	1100	4500	1270	IV
VS-285L	251,800	260	1050	106	1/2	1100	5040	1420	IV
VS-317L	291,000	302	1210	107	3/4	1140	5700	1610	IV
VS-367L	344,000	356	1430	108	3/4	1140	6600	1870	IV
VS-495L	428,000	446	1785	102	1-1/2	1160	9380	1860	IV
VS-585L	515,000	533	2140	106	1-1/2	1160	10,300	2060	IV
VS-700L	620,000	642	2580	108	3	1165	11,900	2380	IV

NOTES:

Constant speed units are rated at capacities shown in regular type; capacities shown in italic faced type apply only to units with multi-speed motors.

To determine BTU per hour capacities at various steam pressures and entering air temperatures, refer to Sterling catalog HCV.

**MAXIMUM MOUNTING HEIGHT IN FEET FOR MODEL "VS" UNIT HEATERS
WITH AND WITHOUT LOUVER CONE DIFFUSER**

Unit Size	Steam Pressure (PSI)					Unit Size	Steam Pressure (PSI)				
	2	5	10	50	75		2	5	10	50	75
VS-40	10.5 12.5	10.0 12.0	10.0 12.0	9.0 11.0	8.0 10.0	VS-144L	18.0 22.5	17.5 22.0	17.5 21.5	15.0 18.5	14.0 18.0
VS-40*	8.0 9.0	8.0 8.5	8.0 8.5	8.0 8.0	8.0 8.0	VS-164	18.0 22.5	17.5 22.0	17.0 21.5	14.5 19.0	14.0 18.0
VS-40L	12.5 14.5	12.0 14.0	12.0 13.5	10.5 12.0	9.5 11.5	VS-164L	22.0 27.5	21.5 27.0	21.0 26.5	18.5 23.5	17.5 22.5
VS-40L*	9.0 10.5	8.5 10.0	8.5 10.0	8.0 9.0	8.0 8.5	VS-200	22.0 27.5	21.5 27.0	21.0 26.5	18.5 24.0	17.5 23.0
VS-62	12.0 14.5	11.5 14.0	11.5 14.0	10.0 12.0	9.5 11.5	VS-200L	25.5 31.5	25.0 31.0	24.5 30.5	22.0 27.0	21.0 26.0
VS-62*	9.5 11.5	9.0 11.0	9.0 11.0	8.0 9.5	8.0 9.0	VS-237	20.0 25.0	19.5 24.0	19.0 23.5	17.0 20.5	16.0 19.5
VS-62L	15.0 19.0	14.5 18.5	14.5 18.5	12.5 16.5	12.0 16.0	VS-237L	24.0 29.5	23.5 28.5	23.0 28.0	20.0 24.5	19.0 23.5
VS-62L*	11.5 14.0	11.0 13.5	11.0 13.5	9.5 12.0	8.0 11.5	VS-285	21.0 26.0	20.5 25.5	20.0 25.0	17.5 22.0	17.0 21.0
VS-77	15.0 18.5	14.5 18.0	14.0 17.5	12.0 15.5	11.5 13.5	VS-285L	25.5 32.0	25.0 31.0	24.5 30.0	21.0 26.0	20.0 25.0
VS-77*	11.0 13.5	10.5 13.0	10.5 13.0	9.0 11.5	8.5 11.0	VS-317	24.0 30.0	23.0 29.0	22.0 28.0	20.0 25.0	19.0 24.0
VS-77L	18.0 22.0	17.5 21.0	17.5 21.0	15.0 19.0	14.0 18.0	VS-317L	29.0 36.0	28.5 35.0	28.0 34.0	25.0 30.0	24.0 29.0
VS-77L*	13.0 17.0	12.5 16.5	12.0 16.0	11.0 14.0	10.5 13.5	VS-367	28.5 35.5	28.0 35.0	27.5 34.0	24.0 30.0	23.0 29.0
VS-104	14.0 17.0	13.5 16.5	13.0 16.0	11.5 14.0	11.0 13.5	VS-367L	32.5 41.0	31.5 40.0	30.5 39.0	27.5 35.0	26.5 33.5
VS-104*	11.0 13.5	10.5 13.0	10.5 13.0	9.5 12.0	9.0 11.5	VS-495	29.5 36.5	29.0 36.0	28.5 35.5	25.0 32.0	24.0 30.5
VS-104L	17.5 21.5	17.0 21.0	16.5 20.5	15.0 18.5	14.5 17.5	VS-495L	35.0 43.5	34.0 42.5	33.0 41.5	29.0 35.0	28.0 34.0
VS-104L*	15.0 18.5	14.5 18.0	14.5 18.0	13.0 16.0	12.5 15.0	VS-585	34.0 42.5	33.0 41.5	32.0 40.5	28.0 36.0	27.0 34.5
VS-125	16.0 19.5	15.5 19.0	15.5 18.5	14.0 17.0	13.5 16.0	VS-585L	37.0 46.5	36.0 45.5	35.0 44.5	31.0 39.0	30.0 37.0
VS-125L	21.0 26.0	20.5 25.5	20.0 25.0	17.5 22.5	17.0 21.5	VS-700	38.5 48.0	37.5 47.0	36.5 46.0	32.0 40.0	30.5 39.0
VS-144	15.5 19.0	15.0 18.5	14.5 18.0	13.0 16.0	12.0 15.5	VS-700L	42.5 53.0	41.5 52.0	40.5 51.0	35.0 44.0	33.5 42.0

NOTES:

* = Low Speed

L = Model "VS" low output model with all air ports open

Figures in bold face show maximum mounting height with louver cone diffusers set vertically.

To meet CSA and OSHA requirements, units mounted below 8 feet from floor must be equipped with an OSHA fan guard. Please see catalog for ordering information.

Above table based on 60°F entering air temperature. In providing for the use of diffusers, it must be remembered that adjustment of a LCD to deflect air toward horizontal immediately lowers the mounting height limit.

**FIGURE C
LOUVER CONE DIFFUSER ROUGHING IN DIMENSIONS**

Unit Size	A	B	C	D	No. of Louvers
40	16 ¹ / ₂	14 ¹ / ₄	6 ¹ / ₂	2 ⁵ / ₈	8
62 & 77	20	17	8	3 ¹ / ₈	8
104 & 125	24 ¹ / ₄	21	9 ³ / ₄	3 ¹⁵ / ₁₆	8
144, 164 & 200	28 ³ / ₈	24 ³ / ₄	11 ¹ / ₂	4 ⁵ / ₈	8
237, 285, 317 & 367	35 ¹ / ₂	31 ¹ / ₂	13 ³ / ₄	4	12
495, 585, 700	41 ¹ / ₂	37 ¹ / ₄	17	4 ³ / ₄	12

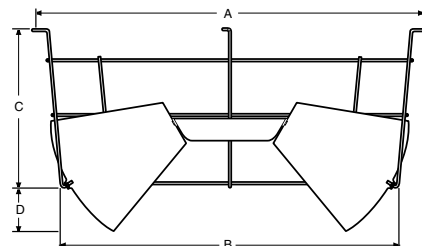


FIGURE C